



Dollars & Sense of Walking
Creating Liveable Communities
Living Streets Aotearoa
Conference 2 - 3 August 2010

abley 
transportation consultants

Accessibility

Measuring Accessibility and Providing Transport Choice



Presenter: Steve Abley
www.abley.com
Monday 2 August 2010





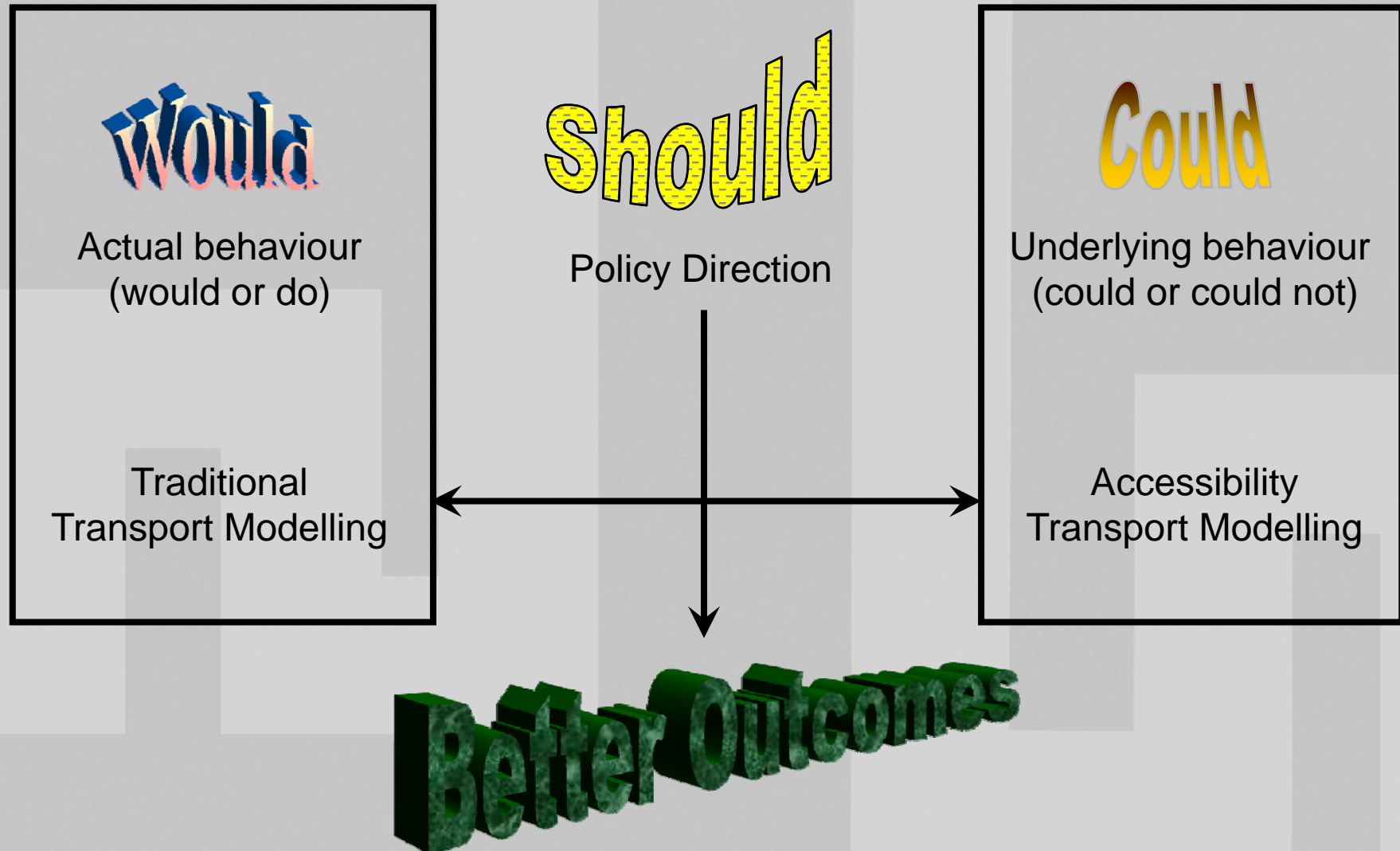
Measure Better



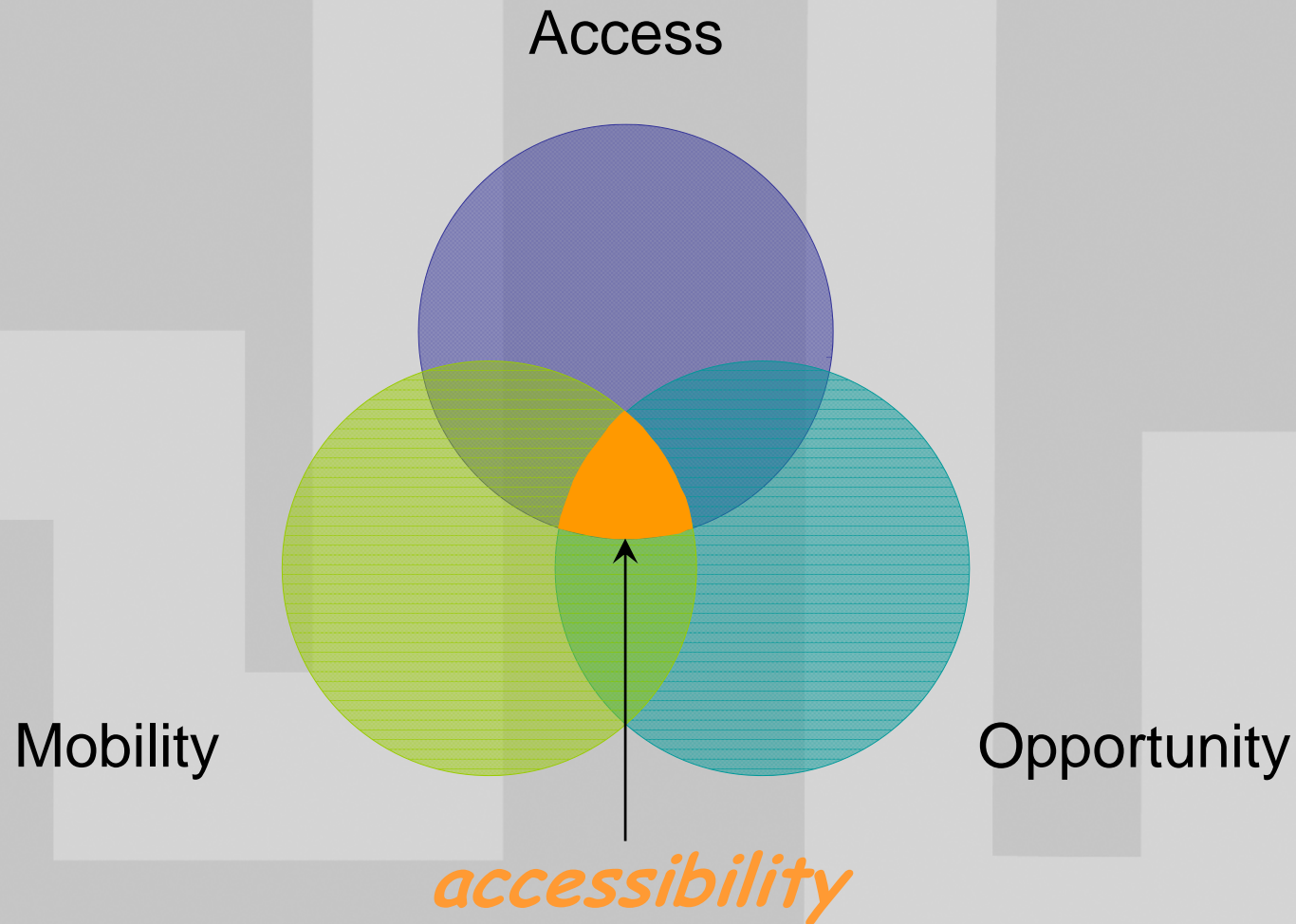
“If an organisation does not measure what it values, it will end up valuing what it measures” – UK Audit Commission



Outcomes

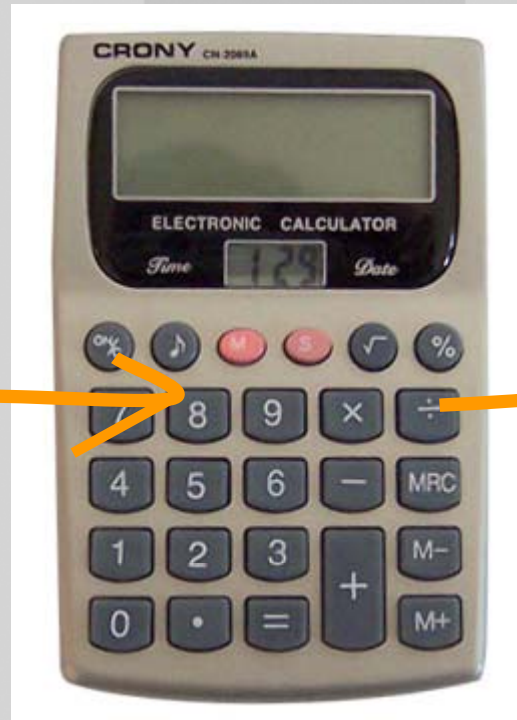


Measuring Accessibility



Solution

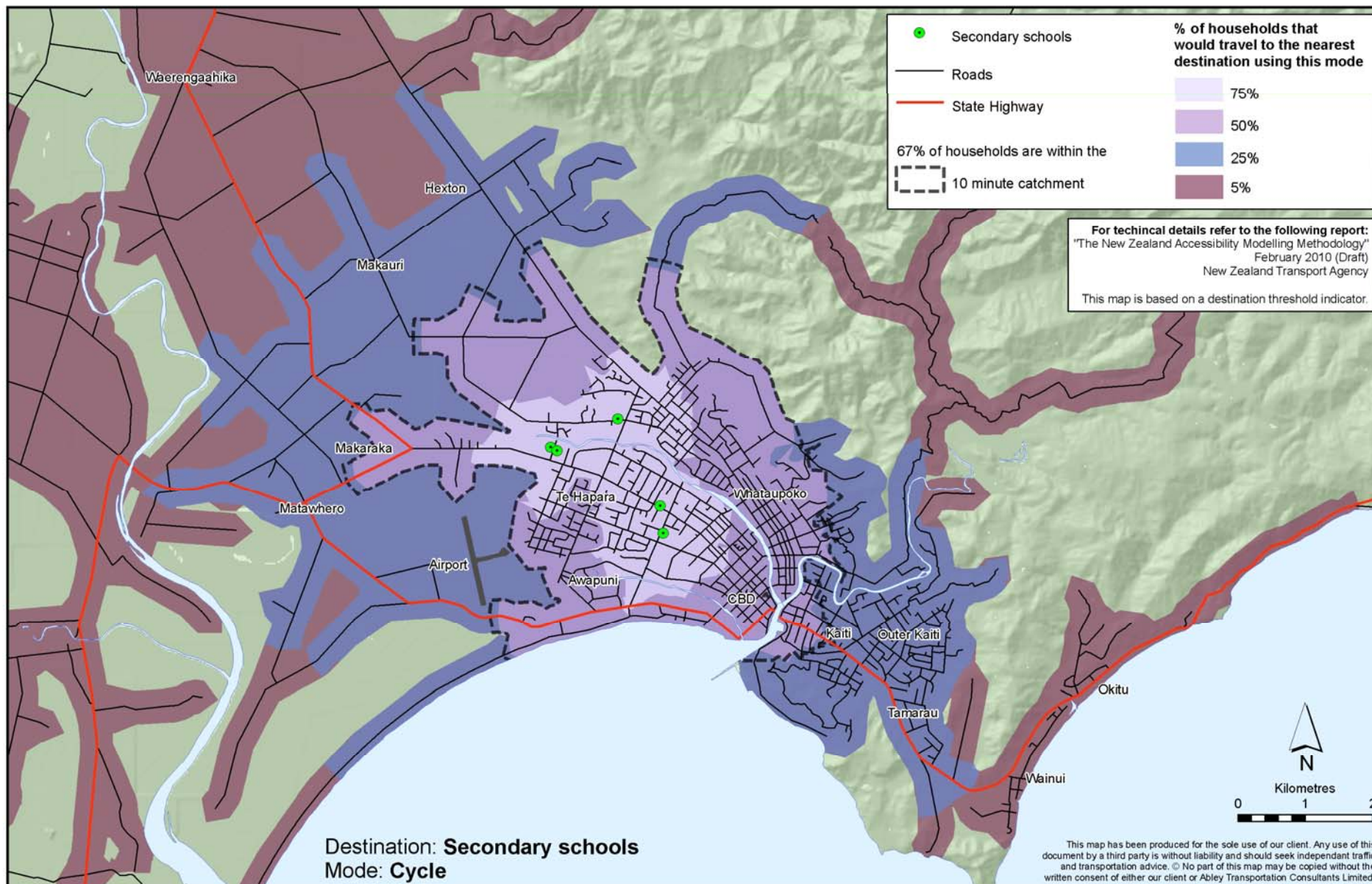
houses
opportunities
services
networks
behaviour
facilities

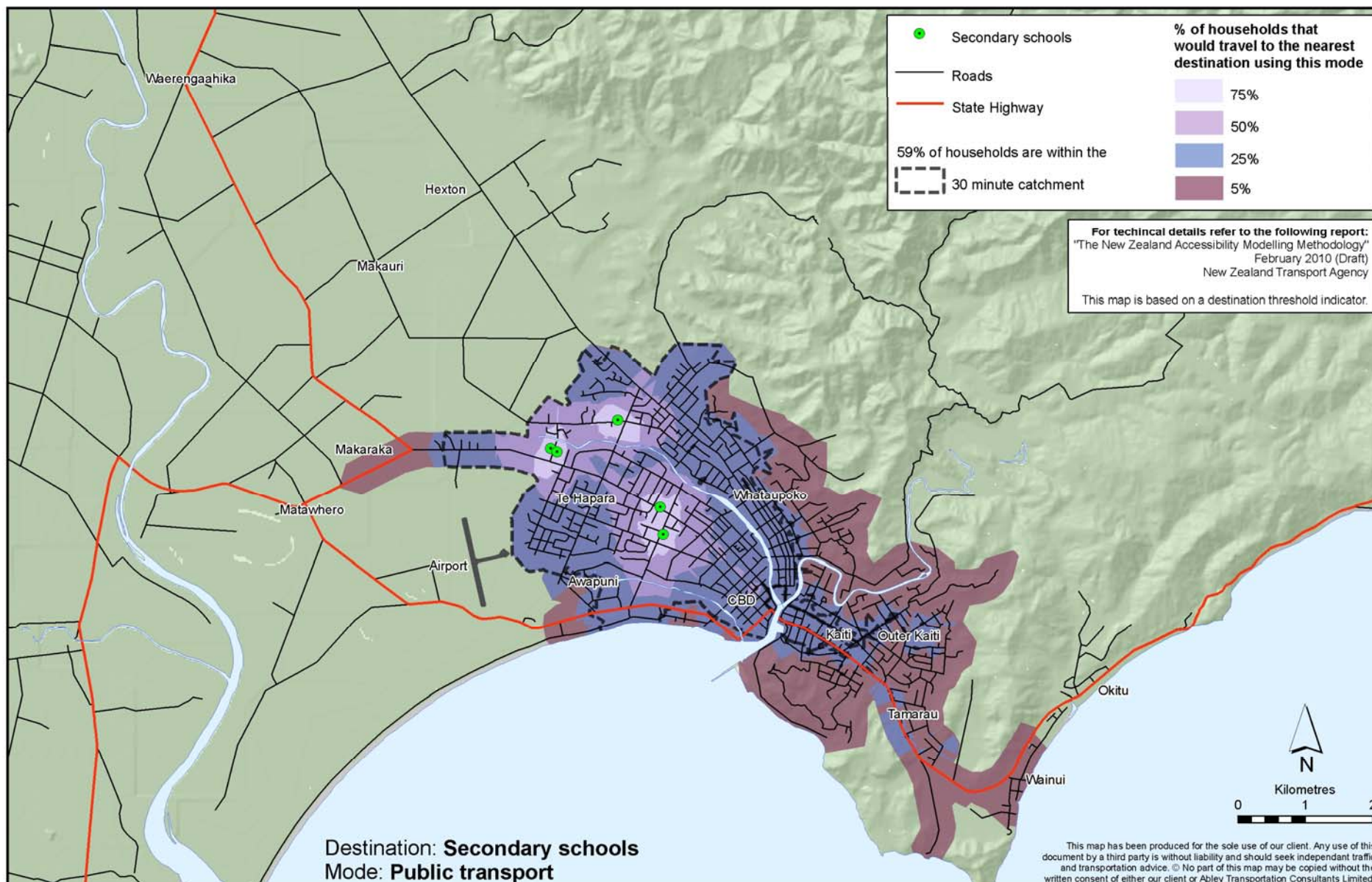


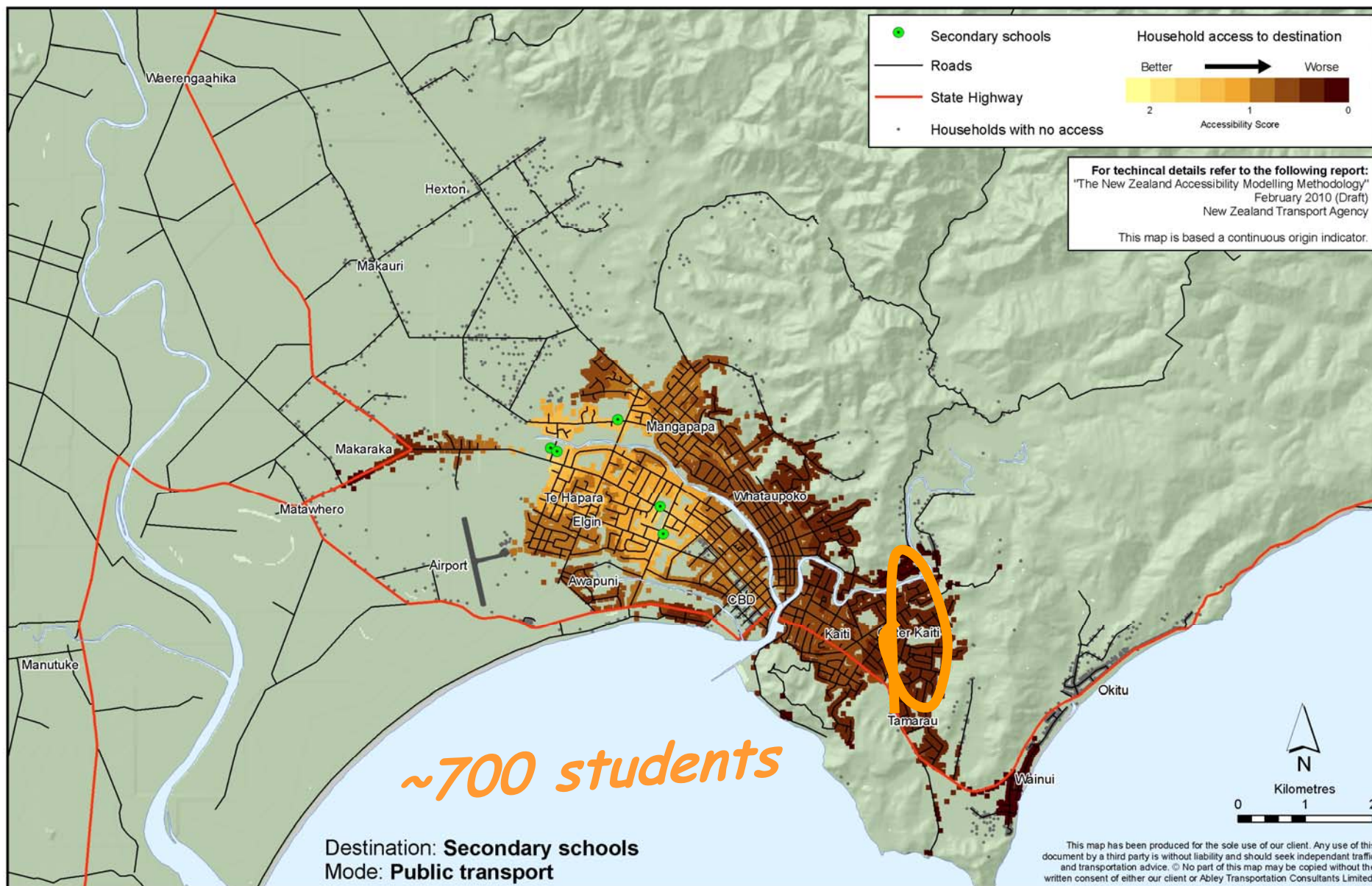
accessibility

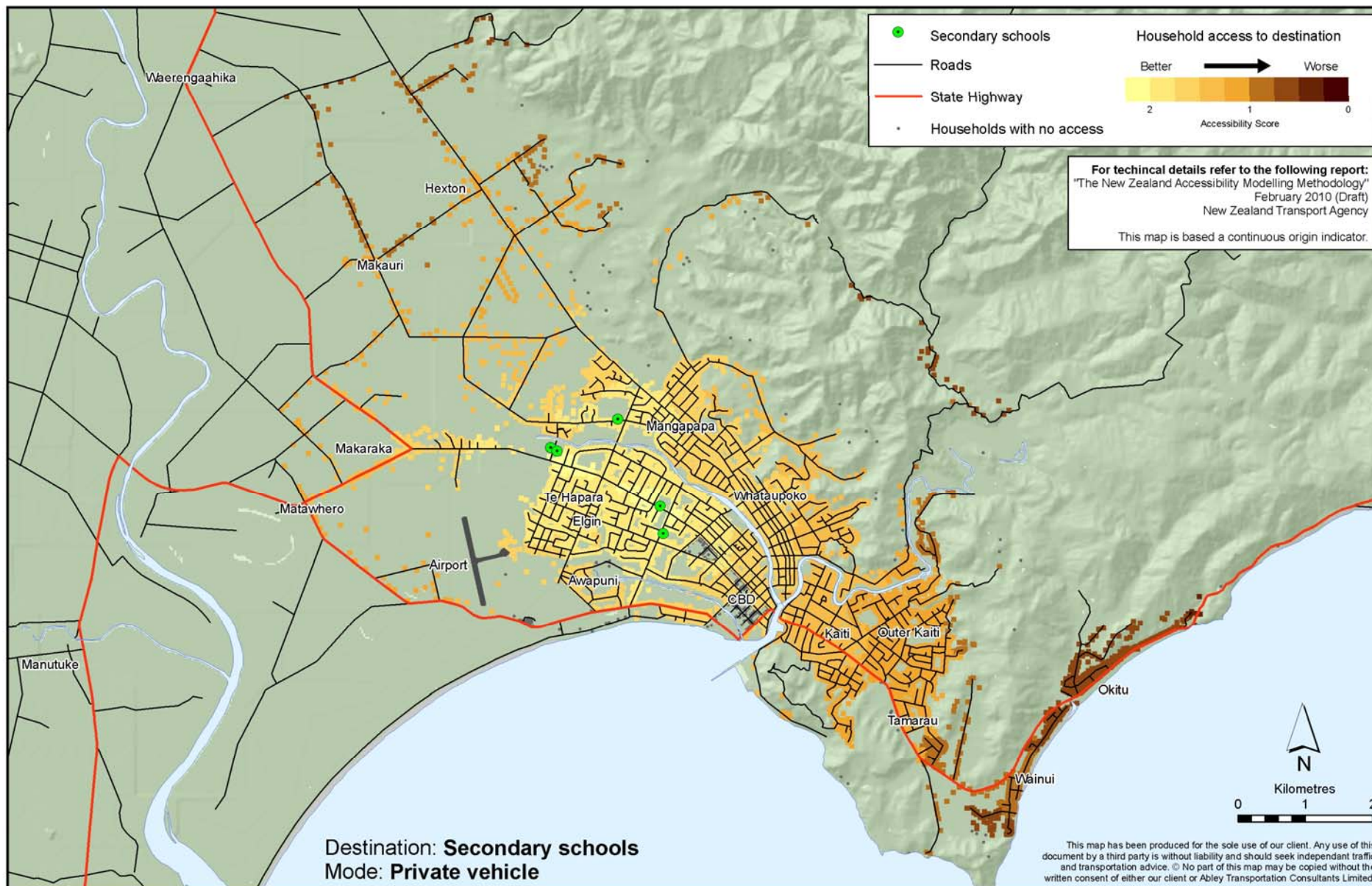
NZTA
Accessibility
Methodology



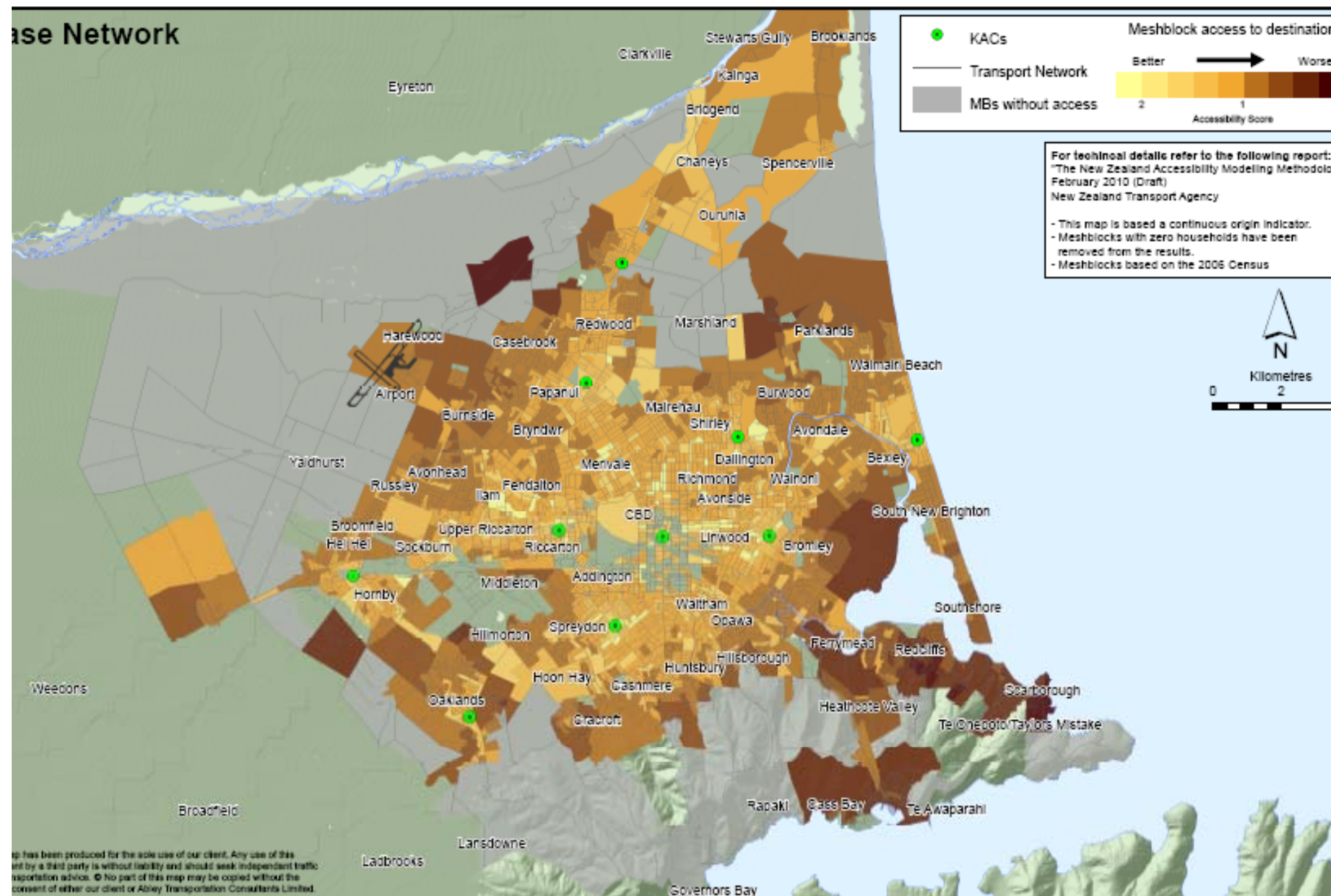




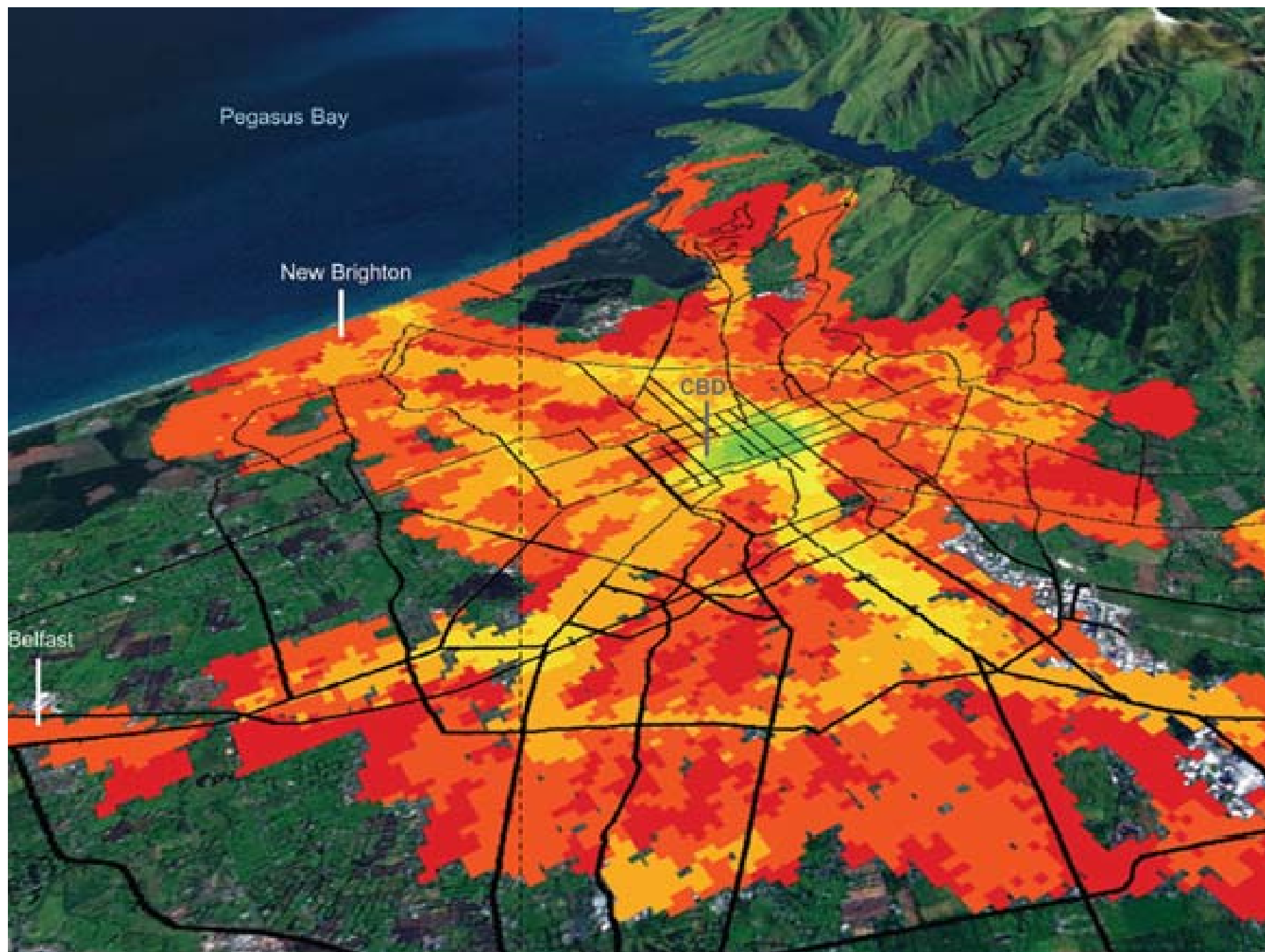


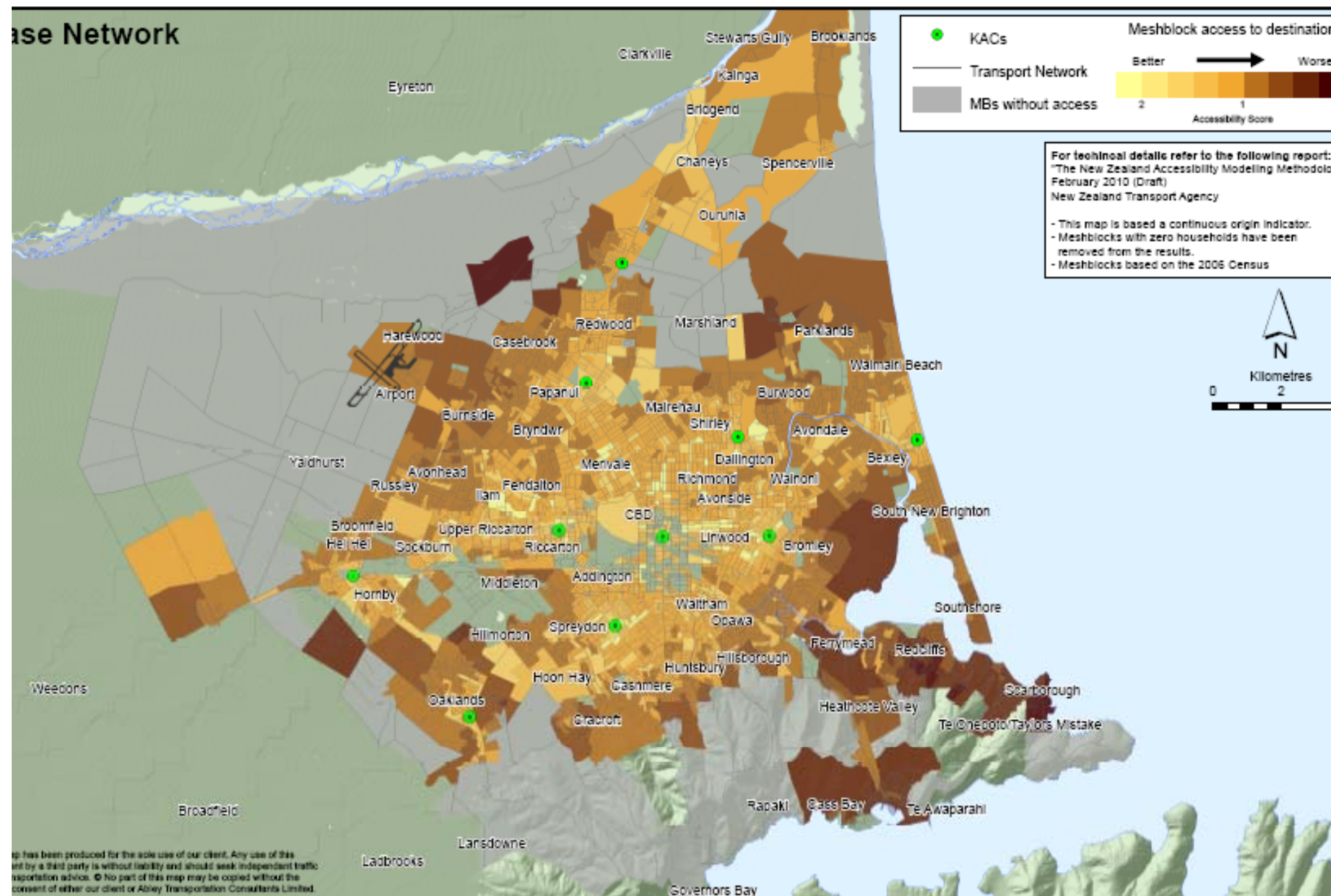






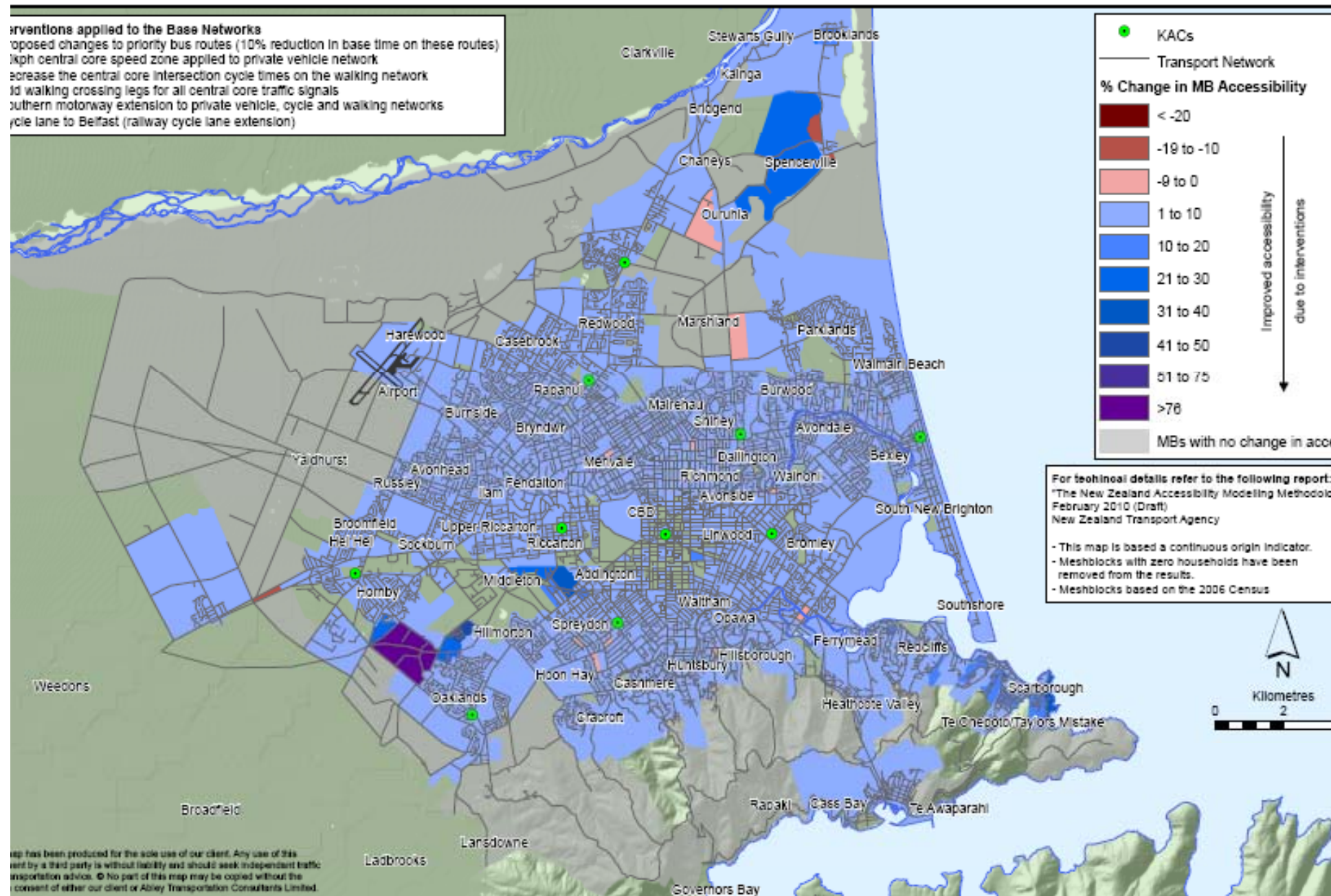
This map has been produced for the sole use of our client. Any use of this map by a third party is without liability and should seek independent traffic transportation advice. © No part of this map may be copied without the consent of either our client or Abley Transportation Consultants Limited.





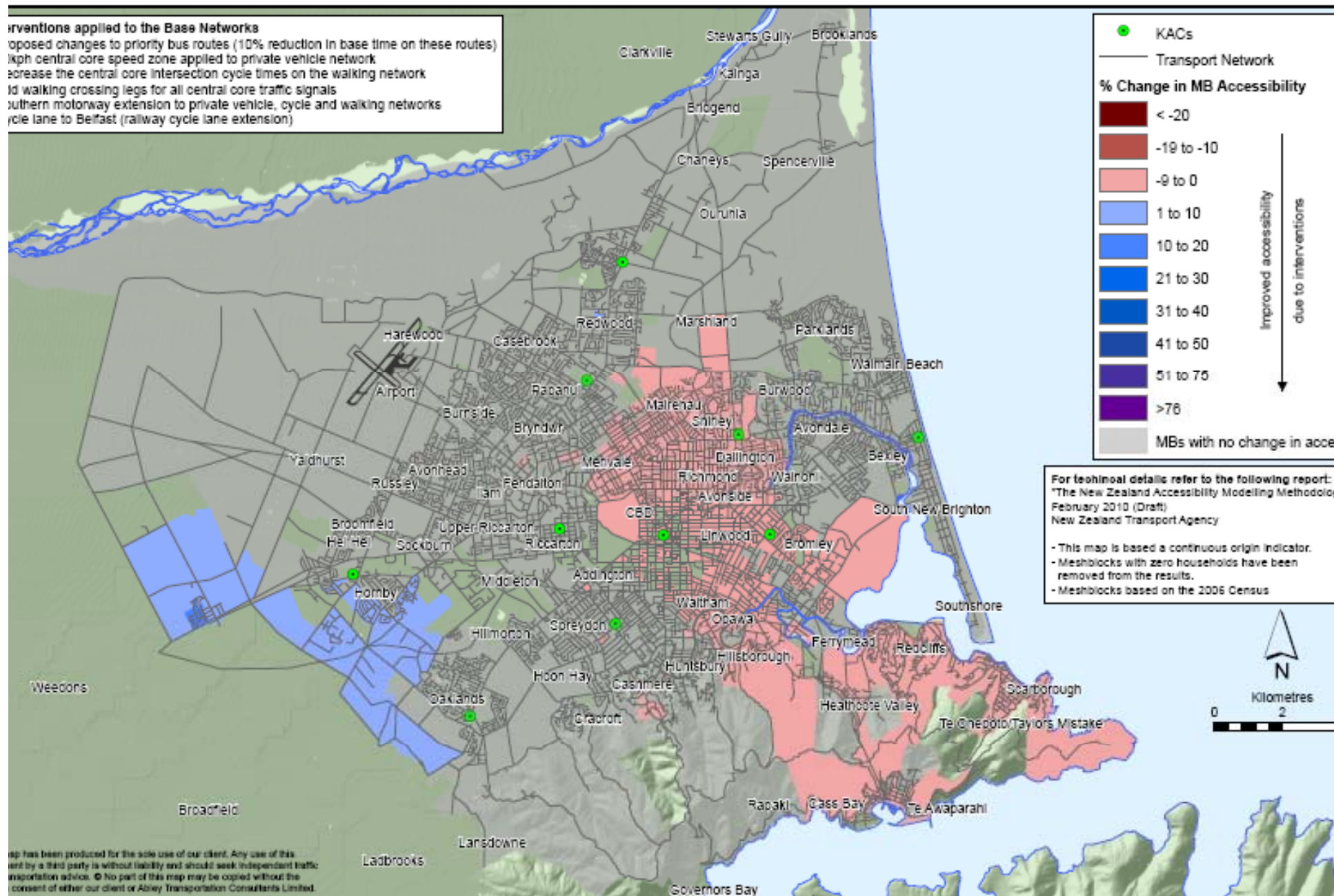
This map has been produced for the sole use of our client. Any use of this map by a third party is without liability and should seek independent traffic transportation advice. © No part of this map may be copied without the consent of either our client or Abley Transportation Consultants Limited.

Interventions applied to the Base Networks
 Proposed changes to priority bus routes (10% reduction in base time on these routes)
 100kph central core speed zone applied to private vehicle network
 Increase the central core intersection cycle times on the walking network
 Add walking crossing legs for all central core traffic signals
 Southern motorway extension to private vehicle, cycle and walking networks
 Cycle lane to Belfast (railway cycle lane extension)



Interventions applied to the Base Networks

Proposed changes to priority bus routes (10% reduction in base time on these routes)
 50kph central core speed zone applied to private vehicle network
 Increase the central core intersection cycle times on the walking network
 Add walking crossing legs for all central core traffic signals
 Southern motorway extension to private vehicle, cycle and walking networks
 Cycle lane to Belfast (railway cycle lane extension)



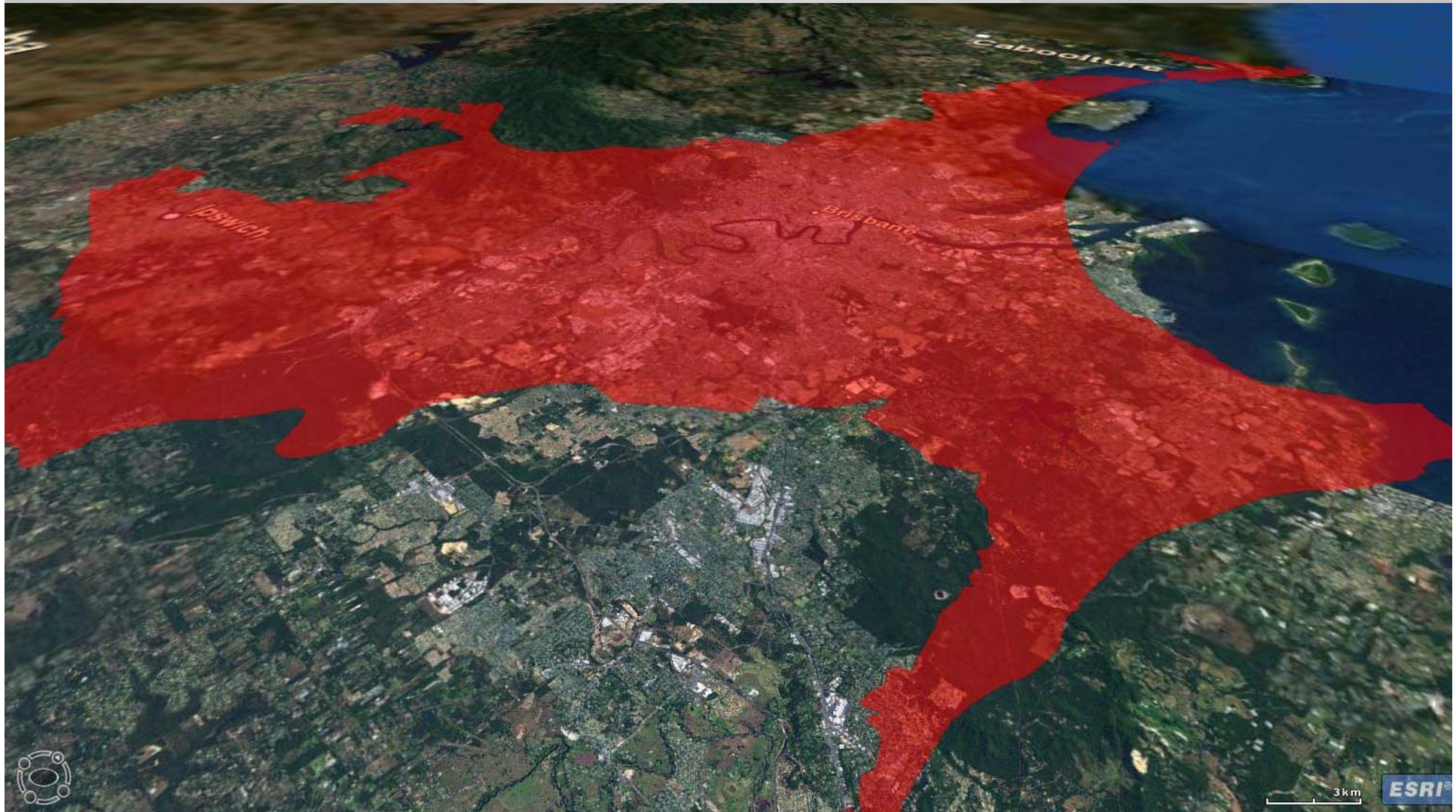
This map has been produced for the sole use of our client. Any use of this map by a third party is without liability and should seek independent traffic engineering advice. No part of this map may be copied without the consent of either our client or Abley Transportation Consultants Limited.



Heretaunga



Brisbane



Conclusions

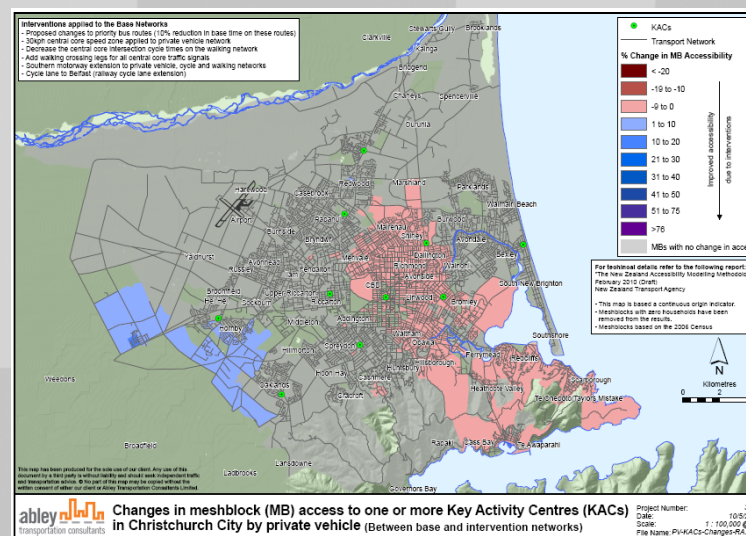
1)



2)

Would Should Could

3)





Dollars & Sense of Walking
Creating Liveable Communities
Living Streets Aotearoa
Conference 2 - 3 August 2010

abley 
transportation consultants

Accessibility

Measuring Accessibility and Providing Transport Choice



Presenter: Steve Abley
www.abley.com
Monday 2 August 2010