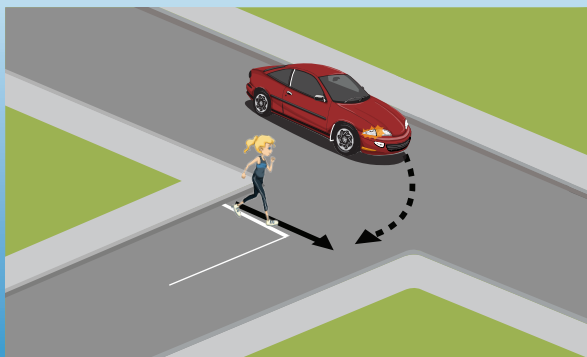
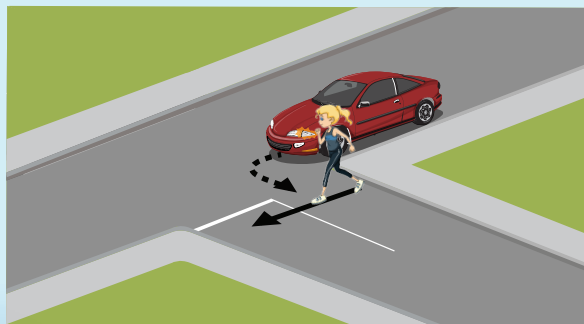


Living Streets Aotearoa



Pedestrians are traffic too!

Proposed Law Change



**We think turning vehicles should
give way to pedestrians going
straight through intersections**

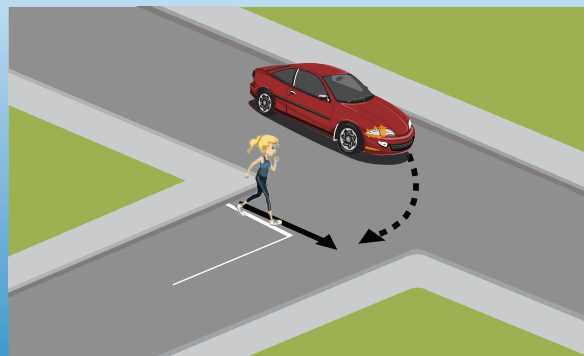
What do you think?

Living Streets Aotearoa



Pedestrians are traffic too!

Proposed Law Change



**We think turning vehicles should
give way to pedestrians going
straight through intersections**

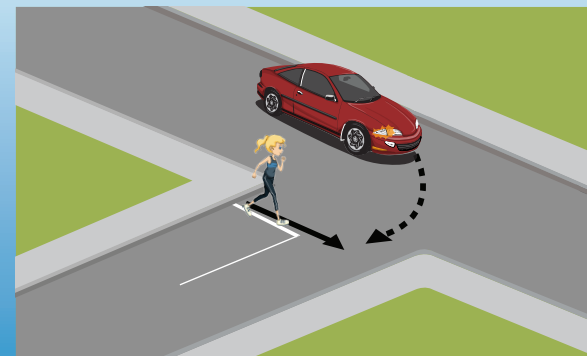
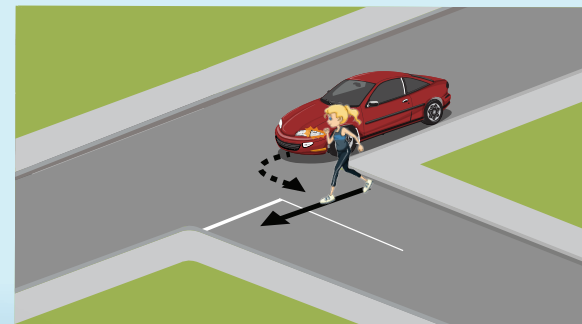
What do you think?

Living Streets Aotearoa



Pedestrians are traffic too!

Proposed Law Change



**We think turning vehicles should
give way to pedestrians going
straight through intersections**

What do you think?

In Australia, UK, Europe and Canada turning vehicles must give way to pedestrians going straight.

In New Zealand, vehicles have to give way to pedestrians only when they are on a zebra crossing, at a traffic-light controlled crossing or in a shared zone.

Many drivers are already courteous towards pedestrians, but let's change the law so that all turning vehicles give way to all road users, **including pedestrians**, going straight through.

Contact your MP and ask for a discussion on this sensible Give Way rule change.

Living Streets Aotearoa helps make conditions better for pedestrians.

Please join us.
www.livingstreets.org.nz

In Australia, UK, Europe and Canada turning vehicles must give way to pedestrians going straight.

In New Zealand, vehicles have to give way to pedestrians only when they are on a zebra crossing, at a traffic-light controlled crossing or in a shared zone.

Many drivers are already courteous towards pedestrians, but let's change the law so that all turning vehicles give way to all road users, **including pedestrians**, going straight through.

Contact your MP and ask for a discussion on this sensible Give Way rule change.

Living Streets Aotearoa helps make conditions better for pedestrians.

Please join us.
www.livingstreets.org.nz

In Australia, UK, Europe and Canada turning vehicles must give way to pedestrians going straight.

In New Zealand, vehicles have to give way to pedestrians only when they are on a zebra crossing, at a traffic-light controlled crossing or in a shared zone.

Many drivers are already courteous towards pedestrians, but let's change the law so that all turning vehicles give way to all road users, **including pedestrians**, going straight through.

Contact your MP and ask for a discussion on this sensible Give Way rule change.

Living Streets Aotearoa helps make conditions better for pedestrians.

Please join us.
www.livingstreets.org.nz